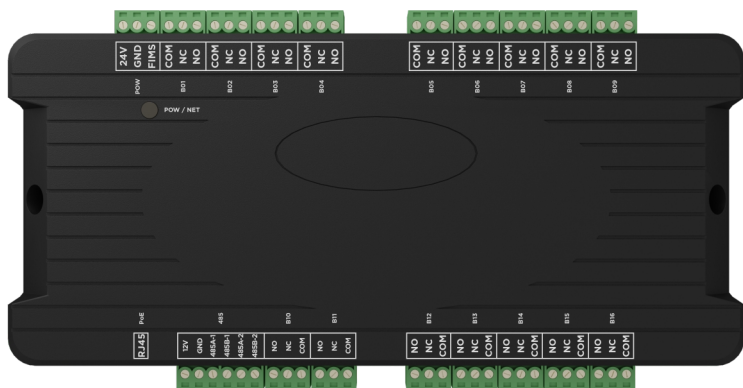


EVRC-IP





Specifications

- Rated voltage: POE support.
- Rated power: 7 W.
- Standby power: 1 W.
- Working temperature: -40 — +75° C.
- Storage relative humidity: 20% - 93%.
- IP Degree: IP30.
- Max number of modules per system: 98.

LIFT CONTROLLER

EVRC-IP



Full User Manual
wiki.bas-ip.com

Device description

The controller is designed to be integrated into the lift system by connecting EVRC-IP dry contacts to the lift controller contacts across floors.

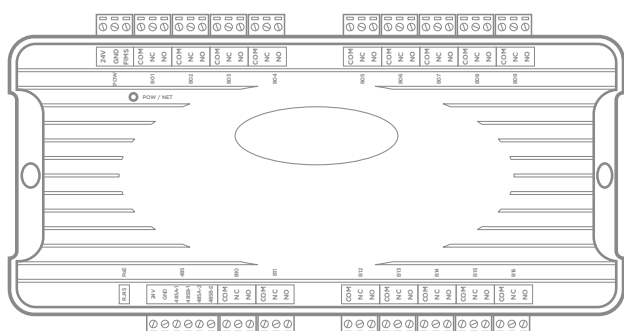
Up to 16 floors with normally open or normally closed contact types can be connected to one controller.

The module has support for PoE power and allows you to organize access to the lift car when calling from the call panel or when presenting a contactless card.

The module has Ethernet interaction interface. On this interface, the module receives information about the raised card or the entered code, on the basis of which gives different access rights to use the lift.

You can also connect fire alarm contacts to the controller to lock the lift in case of fire.

Appearance



Completeness check of the product

Before installing the controller, be sure to check that it is complete and all components are available.

The controller kit includes:

Controller	1 pc
Manual	1 pc

Electrical connection

After verifying the device’s completeness, you can switch to the controller connection.

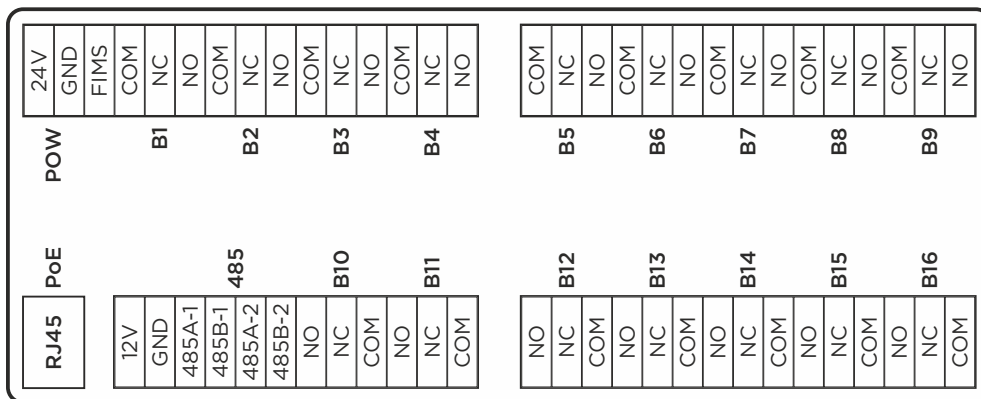
To connect controller you will need:

- An Ethernet UTP CAT5 or higher cable connected to a PoE switch or to a normal switch/router.

Cable length recommendations

The maximum length of the UTP CAT5 cable segment should not exceed 100 meters, according to the IEEE 802.3 standard.

- Power supply at +24 Volts DC if there isn’t PoE.

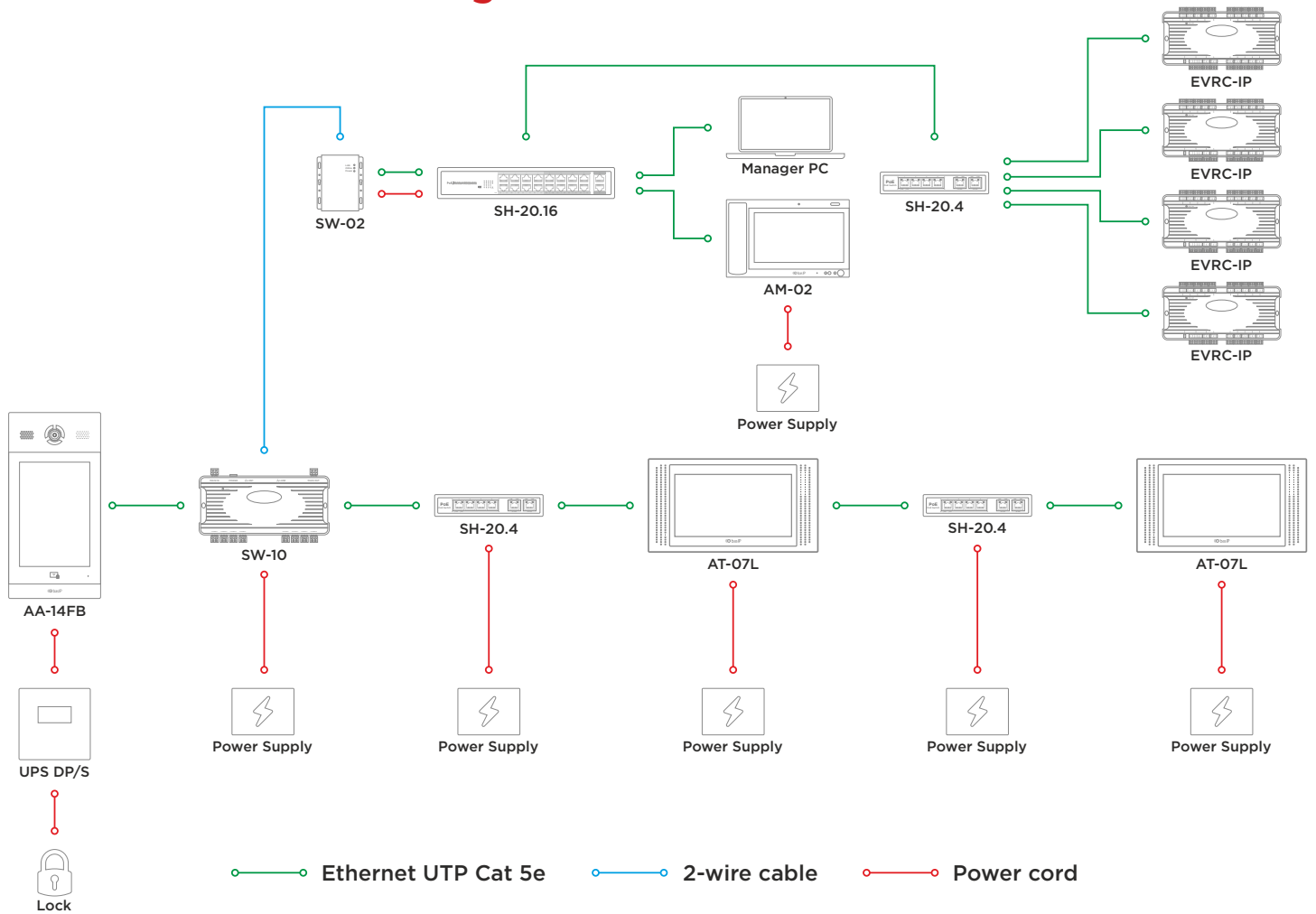


The connection scheme of all components

To connect the relay contacts of each floor you need to use the contacts **NO** and **COM**.

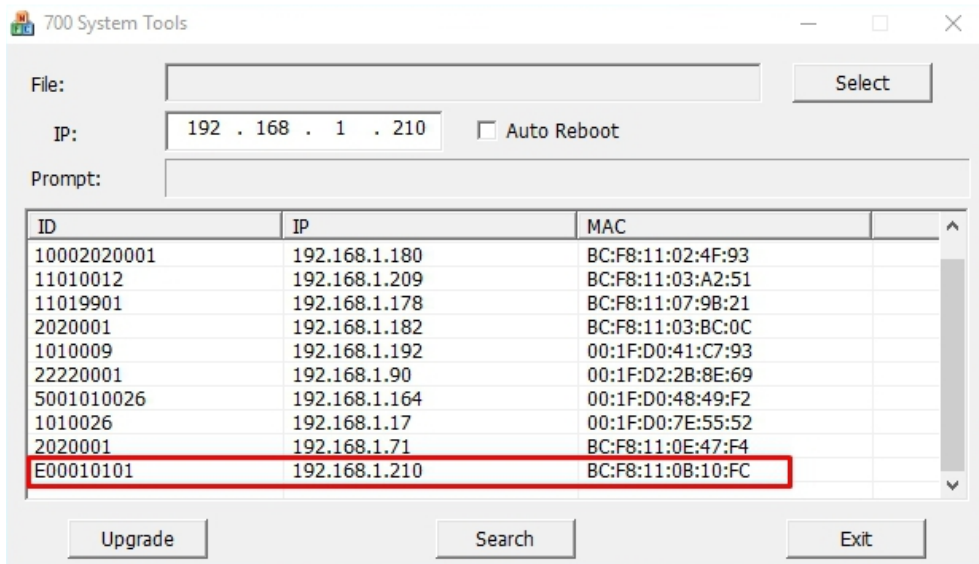
On the main board, near each port there is a three-pin connector. If you want the relay to be in the position **N.C.** after turning off the power, connect terminals 1 and 2. If you want the relay to be in the **N.O.** after power on, connect terminals 3 and 2.

Connection and searching the device



Connect the controller to the power supply through a PoE switch, either from a 24-volt power supply and to your local area network. After that, run the program Remote Upgrade tool.

In the list of devices, find the controller as shown in the picture below (the controller has the letter E in its ID, which makes it easy to find it in the list of devices):



By default, the controller has an IP address of 192.168.68.90.

Warranty

The warranty card number _____

Model name _____

Serial number _____

Seller name _____

With following stated terms of warranty is familiar, functional test was performed in my presence:

Customer signature _____

Warranty conditions

The warranty period of the product — 36 (thirty-six) months from the date of sale.

- Transportation of product must be in its original packaging or supplied one by the seller.
- The product is accepted in warranty repair only with a properly filled warranty card and the presence of intact stickers or labels.
- The product is accepted for examination in accordance with the cases provided by law, only in the original packaging, in a full complete set, appearance corresponding to the new equipment and presence of all relevant properly filled documents.
- This warranty is in addition to the constitutional and other consumer rights and in no way restrict them.

Terms of warranty

- The warranty card must indicate the name of the model, serial number, purchase date, name of the seller, seller company stamp and the customer's signature.
- Delivery to the warranty repair is carried out by the buyer himself.
- Warranty repairs carried out only during the warranty period specified in the warranty card.
- The service center is committed to do everything possible to carry out the repair warranty products, up to 24 working days. The period spent on the restoration of product functionality is added to the warranty period.



www.bas-ip.com