

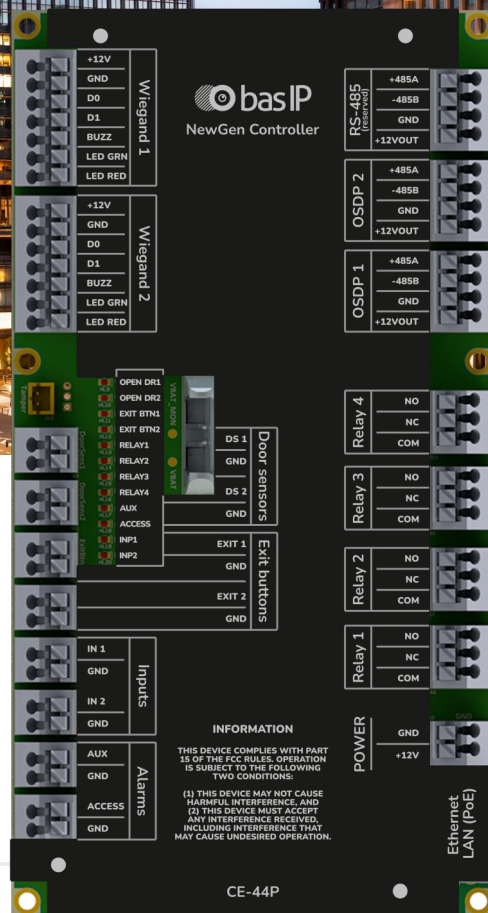
CE-44P

ACCESS CONTROLLER

Description

The BAS-IP New Gen Controller is an advanced access control device featuring Wiegand, OSDP, and RS-485 interfaces. It supports reader connections, configurable LED outputs, and built-in relays, offering exceptional versatility.

With its multi-language web interface, the controller ensures seamless integration into any access control system and allows flexible configuration of each interface and input.



Specifications

OSDP	2 RS-485 ports
RS-485	Optional
Ethernet	10/100Mbps
Communication	TCP/IP
Inputs	8 (Door Sensor, Push Exit, Security Alarm, Additional Buttons)
Readers	2 OSDP 2 Wiegand (with controlled LED and buzzer)
Outputs	12 open collector outputs for LED control
Relay Outputs	4 (NC, NO, COM)
LED Status Indicators	4 for Relay control 2 for Door open 2 for Push Exit button 2 for Security alarm 2 for Additional buttons
Power Supply	+12V DC, PoE 802.3af
Power Consumption	5W (standard), 1.5W (standby)
Built-in Memory Supply	Coin battery (CR3032) for constant NTP server synchronization

Functional capabilities

Interface	Multi-language web interface
Operating System	Linux
Identifiers in Controller Memory	100 000
Integration with ACS	Wiegand, OSDP
Built-in Wiegand Input	8, 26, 32, 34, 37, 40, 42, 56, 58, 64, 66, 128, 256 (raw) bits
Built-in OSDP Input	OSDP v.2.2
Amount of Wiegand Inputs	2
Ability to Connect a Keypad	Yes, Readable Length of Keypad Codes - 4, 6, 8 bits
Ability to Connect	Door Sensor (2 inputs) Exit Button (2 inputs) Security Alarm Fire Alarm Additional Buttons (2 inputs)
Authentication	Separate password for the web interface
Additionally	Link software support, Open API, Flexible configuration of connected devices